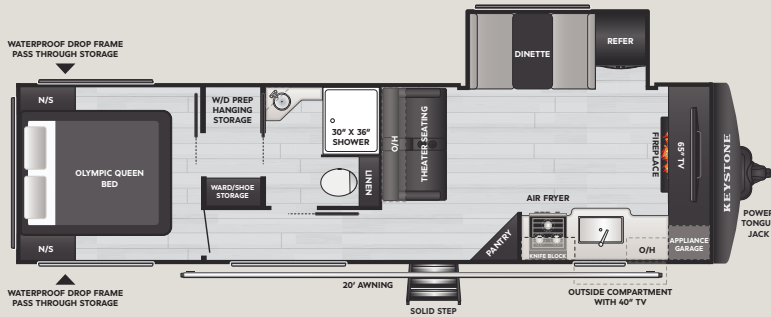


HIDEOUT MAX

TRAVEL TRAILER

SCAN FOR MORE INFO

NEW

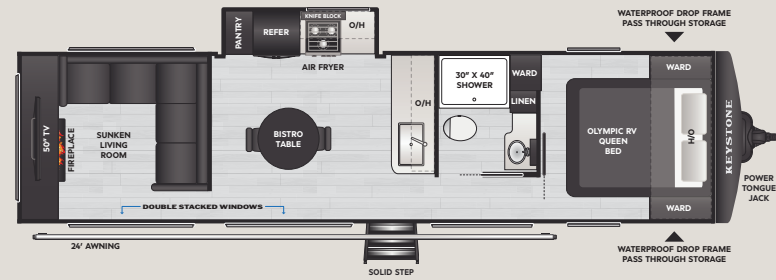


29HAVEN

WEIGHT 7355

LENGTH 33' 11"

NEW

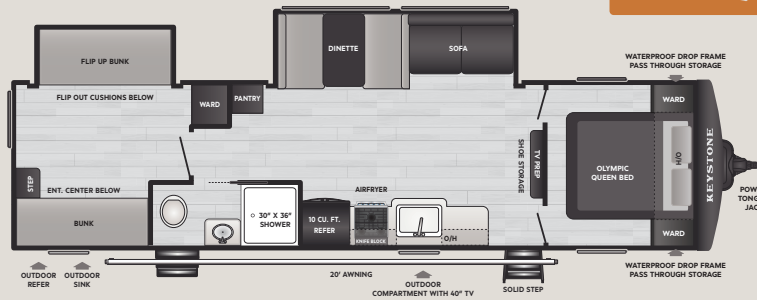


31SUNROOM

WEIGHT 7430

LENGTH 35' 11"

NEW



310XBR

WEIGHT 8250

LENGTH 35' 11"



DISCLAIMER: Product information is as accurate as possible as of the date of publication of this publication. All features, floor plans, and specifications in this publication are subject to change without notice. Please also consult Keystone's web site at www.keystonerv.com for more current product information and specifications. Tow Vehicle Disclaimer. CAUTION: Owners of Keystone recreational vehicles are solely responsible for the selection and proper use of tow vehicles. All customers should consult with a motor vehicle manufacturer or their dealer concerning the purchase and use of suitable tow vehicles for Keystone products. Keystone disclaims any liability or damages suffered as a result of the selection, operation, use or misuse of a tow vehicle. KEYSTONE'S LIMITED WARRANTY DOES NOT COVER DAMAGE TO THE RECREATIONAL VEHICLE OR THE TOW VEHICLE AS A RESULT OF THE SELECTION, OPERATION, USE OR MISUSE OF THE TOW VEHICLE. *Length is defined as the distance from the centerline of hitch pin/coupler to rear bumper of trailer. ** Fresh water capacity includes water heater. Please review owner's manual prior to purchase for more information on service warranties, extended use, towing and maintenance. Owner's manuals can be found at keystonerv.com. PRINTED 12.2025.

STANDARD FEATURES & OPTIONS

INTERIOR

- ◆ LED TV
- ◆ Central Vac
- ◆ 132" Convertible Sofa - Dinette - Lounger - Sleeper
- ◆ XL Kitchen Window
- ◆ Storage Bins 41qt Under Dinettes
- ◆ Stainless Steel Sink
- ◆ Hi-Rise Kitchen Faucet
- ◆ Top Drawer Kitchen Countertop Extension
- ◆ Bathroom Towel Bar and Toilet Paper Holder
- ◆ Porcelain Foot Flush Toilet
- ◆ Silverware Drawer w/Divider
- ◆ Pressed Membrane Premium Countertops
- ◆ Pots and Pans Drawer below Oven
- ◆ Decorative Tub Surround
- ◆ Trash Bins in Kitchen and Bathroom Cabinets
- ◆ King Bed 66" X 80" w/ Underbed Storage Bins
- ◆ Master Bed Bedding Package
- ◆ Bedside Cubby w/ Shelf / 12V USB / Lights
- ◆ Bedroom Wardrobe and Overhead Shelf
- ◆ Blackout Night Shades
- ◆ Lithium Ready 12V Converter
- ◆ 1.1 Cu. Ft. Air Fryer Microwave
- ◆ 10 Cu. Ft. 12V Refrigerator
- ◆ 3-Burner Gas Range w/ Exhaust Hood
- ◆ LED Lighting
- ◆ 82" Sidewall Height
- ◆ Tankless Water Heater
- ◆ SolarFlex™ Ready

EXTERIOR

- ◆ Power Stabilizer Jacks
- ◆ Waterproof Drop Frame Pass Through Storage
- ◆ Exterior Folding Table – Pass Through Mounted
- ◆ 26K Dual A/C System on 30Amp (18K Chill® Cube + Ducted 8K)
- ◆ Outside TV Compartment
- ◆ Fishing Rod Holder in Pass Through
- ◆ Solid Step Entry Steps
- ◆ Power Tongue Jack
- ◆ Outside Shower
- ◆ Giggly Box Battery Disconnect
- ◆ Tinted Safety Glass Windows
- ◆ Walkable Roof w/ Ladder Prep
- ◆ Black Tank Flush
- ◆ Spare Tire Kit
- ◆ XL Entry Assist Handle
- ◆ Power Awning w/ LED Lights
- ◆ 30K BTU Furnace
- ◆ Furrion Backup Camera Prep
- ◆ Tire Linc® TPMS Prep

OPTION

- ◆ 50 AMP Service (SELECT MODELS)
- ◆ SolarFlex™ Protect