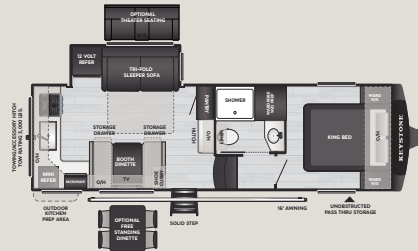


COUGAR

HALF-TON

FIFTH WHEELS

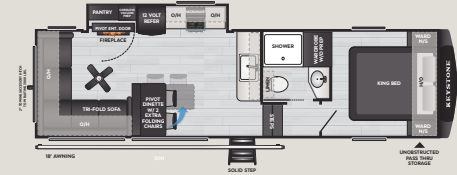
SCAN FOR MORE INFO



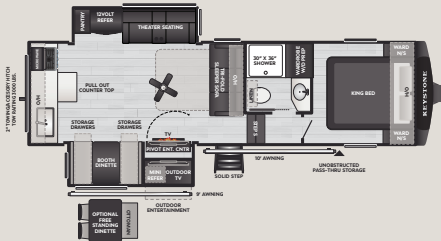
23MLE | WEIGHT 7745 | LENGTH 27' 11"



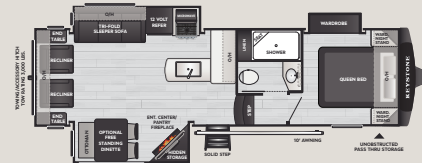
24RDS | WEIGHT 7612 | LENGTH 28' 10"



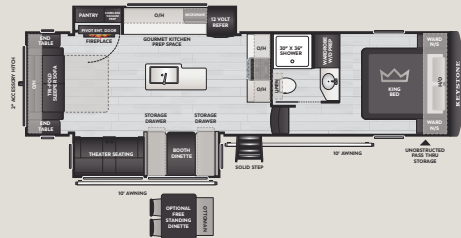
26RES | WEIGHT 8200 | LENGTH 30' 11"



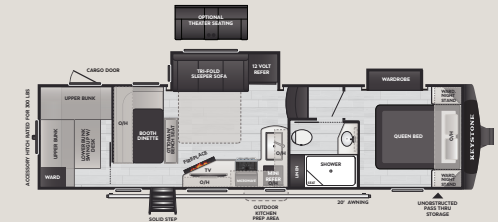
26RKE | WEIGHT 9200 | LENGTH 30' 10"



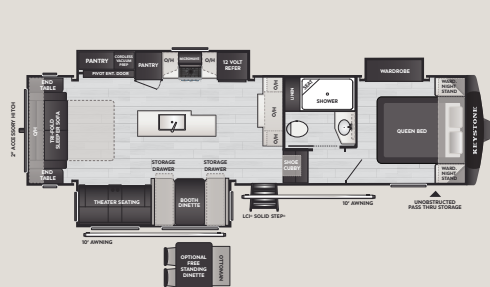
27SGS | WEIGHT 8343 | LENGTH 30' 6"



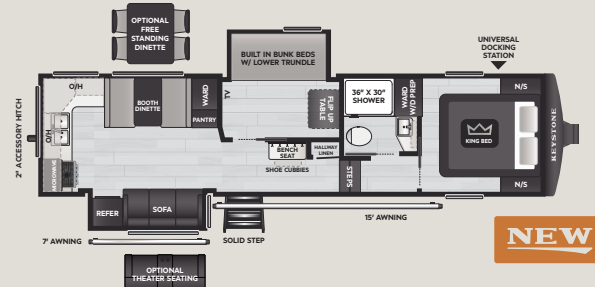
28RLI | WEIGHT 9050 | LENGTH 32' 8"



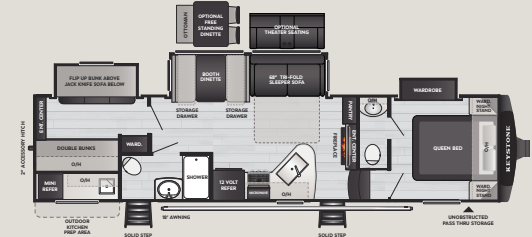
29BHL | WEIGHT 8345 | LENGTH 33' 4"



29RLI | WEIGHT 8893 | LENGTH 32' 9"



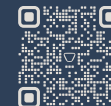
29MBD | WEIGHT 9225 | LENGTH 33' 11"



32BHS | WEIGHT 9428 | LENGTH 35' 8"



DISCLAIMER: Product information is as accurate as possible as of the date of publication of this publication. All features, floor plans, and specifications in this publication are subject to change without notice. Please also consult Keystone's web site at www.keystonerv.com for more current product information and specifications. Tow Vehicle Disclaimer: Owners of Keystone recreational vehicles are solely responsible for the selection and proper use of tow vehicles. All customers should consult with a motor vehicle manufacturer or their dealer concerning the purchase and use of suitable tow vehicles for Keystone products. Keystone disclaims any liability or damages suffered as a result of the selection, operation, use or misuse of a tow vehicle. KEYSTONE'S LIMITED WARRANTY DOES NOT COVER DAMAGE TO THE RECREATIONAL VEHICLE OR THE TOW VEHICLE AS A RESULT OF THE SELECTION, OPERATION, USE OR MISUSE OF THE TOW VEHICLE. *Length is defined as the distance from the centerline of hitch pin/coupler to rear bumper of trailer. ** Fresh water capacity includes water heater. Please review owner's manual prior to purchase for more information on service warranties, extended use, towing and maintenance. Owner's manuals can be found at keystonerv.com.



STANDARD FEATURES & OPTIONS

PROFESSIONAL GRADE CAMPING PACKAGE

- ◆ 55 Gallon Fresh Water Tank
- ◆ Washer/Dryer Prep (*SELECT MODELS*)
- ◆ Best In Class Unobstructed Ext. Pass Through Storage
- ◆ Extra-Wide entry step with composite step treads
- ◆ Entry Door Privacy Shade
- ◆ Vent-All Window System
- ◆ On-Demand Water Heater
- ◆ 5-Sided Aluminum Superstructure
- ◆ AlphaPly roof membrane with Limited Lifetime Warranty
- ◆ Fully Walkable Roof and Slide-out Roof
- ◆ Dual 30lb LP Tanks
- ◆ LP Quick Disconnect for Grilling
- ◆ Power Watchdog Safeview Smart RV power inlet: 50 amp
- ◆ Dimmable Lights in Main Slide, Living Room & Bedroom
- ◆ High Definition Smart TV
- ◆ Dual Zone Bluetooth Audio System
- ◆ Winegard 360 Plus w/ WIFI Prep, Satellite Pass-through
- ◆ 12V Charging Stations Throughout
- ◆ Blackout Roller shades Throughout
- ◆ Linoleum Slideout Flooring
- ◆ Single Bowl Stainless Steel Kitchen Sink w/ Sink Covers
- ◆ High Rise Kitchen Faucet w/ Pullout Sprayer
- ◆ Furrion 21" Oven w/ 3 Burner Cooktop
- ◆ Universal Docking Station - Easy Winterization
- ◆ Power Tank Fill
- ◆ Exterior Awning Switch in Pass-Thru
- ◆ Water Pump Easy Access w/ Hinged Door
- ◆ Hardwood Cabinet Doors w/ Soft Close Hidden Hinges

- ◆ Key-Alike lock system
- ◆ Under Bed Storage w/ Strut Assist
- ◆ Nightstands w/ 110 Outlets and USB Ports
- ◆ Booth Dinette w/LED Lights and Drawers
- ◆ Slide Topper Prep
- ◆ Dedicated shower light
- ◆ Oxygenics® shower head and hose

TOWING W/ CONFIDENCE PACKAGE WITH ABS

- ◆ Max Turn Technology
- ◆ Lippert Axles w/ Anti-Lock Braking System
- ◆ Bronze bushings, heavy duty 1/2 shackle plates & wet bolts
- ◆ Goodyear Endurance Tires
- ◆ Tire Linc TPMS Prep
- ◆ Full Size Spare Tire
- ◆ Curt Helux Series Coil Spring Pin Box (*SELECT MODELS*)
- ◆ Curt Road Armor Shock Absorbing Pin Box (*SELECT MODELS*)
- ◆ Curt Road Armor Shock Absorbing Equalizer
- ◆ Reverse warning lights in taillight
- ◆ 2" Accessory Hitch (*SELECT MODELS*)
- ◆ 2" Towing Hitch with 4 way plug (*SELECT MODELS*)
- ◆ Rear observation camera prep

COUGAR INNOVATION PACKAGE

- ◆ Water management center for individual shut-off valves
- ◆ HIGH GLOSS HyperCore® Composite Sidewalls
- ◆ Hyper-Deck Water Resistant Flooring
- ◆ Color Coded & Unified Wiring System
- ◆ Giggy Box-Industry's 1st Organized 12 volt Wiring Box
- ◆ KeyTV™ multisource signal controller, patented
- ◆ MY KEYSTONE Owners Mobile App
- ◆ Painted Front Cap w/ Automotive Clear Coat
- ◆ Tank Guardian High Tensile Strength Strap System
- ◆ Double Welded Aluminum Frame Construction
- ◆ Tuf-Lok™ thermoplastic air conditioning duct joiners
- ◆ Decorative Snap-In Ceiling & Crown Molding Treatments
- ◆ Power converter with auto-detect battery recognition
- ◆ Tough-ply flooring in main storage compartment

CLIMATE GUARD PROTECTION PACKAGE

- ◆ 18K Furrion High Efficiency Chill Cube A/C, Ducted
- ◆ 30K BTU Furnace
- ◆ Tinted Windows
- ◆ Astrofoil Insulated Underbelly w/ Forced-Air Heated & Enclosed
- ◆ 12Volt-Heat Pads on Holding Tanks
- ◆ Heated/Enclosed Convenience Center
- ◆ Reflective Foil in Front Cap & Sealed Pin Box, Slide Floors
- ◆ Dual Attic Vents
- ◆ Pex Plumbing Lines
- ◆ Insulated Gooseneck & Bulkhead Divider
- ◆ Foil backed, foam core A/C duct with Tuf-Lok™ joiners